

# City-Scale Road Audit System using Deep Learning

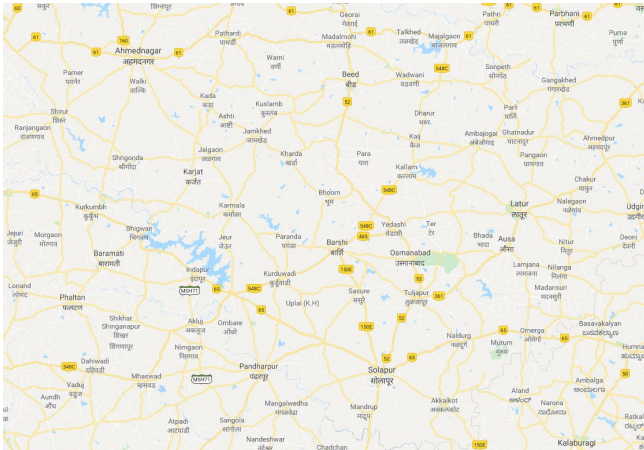
**Sudhir Yarram**, Girish Varma, C. V. Jawahar

IIIT Hyderabad



# Motivation

## Scale of the road network



Road Network in Hyderabad,  
India - 1500 kms

# Motivation



Muddy Road



Water-log



Pothole + Muddy Road



Pothole



Rough Road

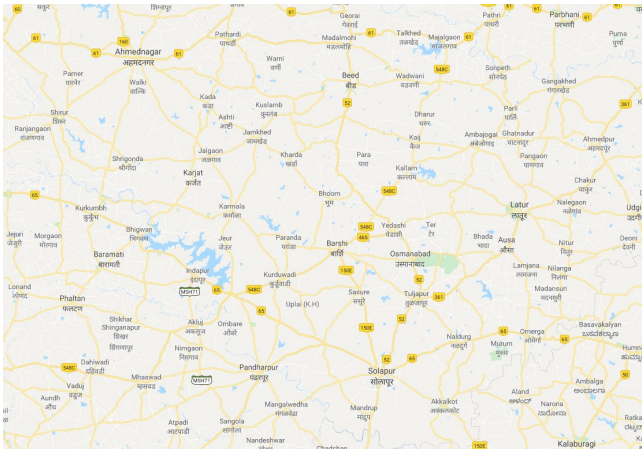


Wet Road

The above Images are from the *Road-defect dataset* that we have collected for this work

# Motivation

Scale of the road network



Road Network in Hyderabad,  
India - 1500 kms

Huge Inconvenience for citizens

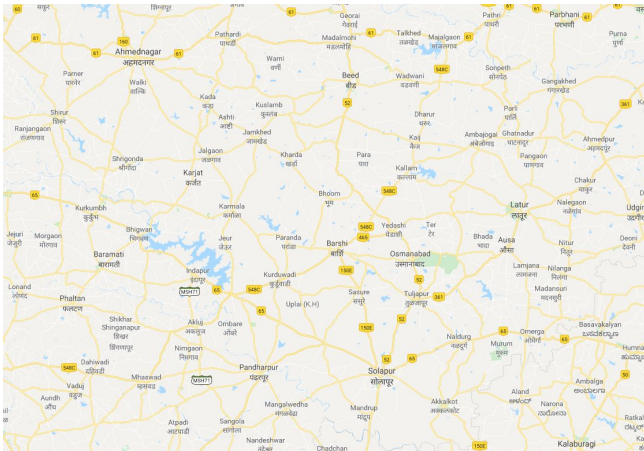


Small  
disruption



# Motivation

Scale of the road network



Quick response to disasters



Costly existing systems



# Motivation

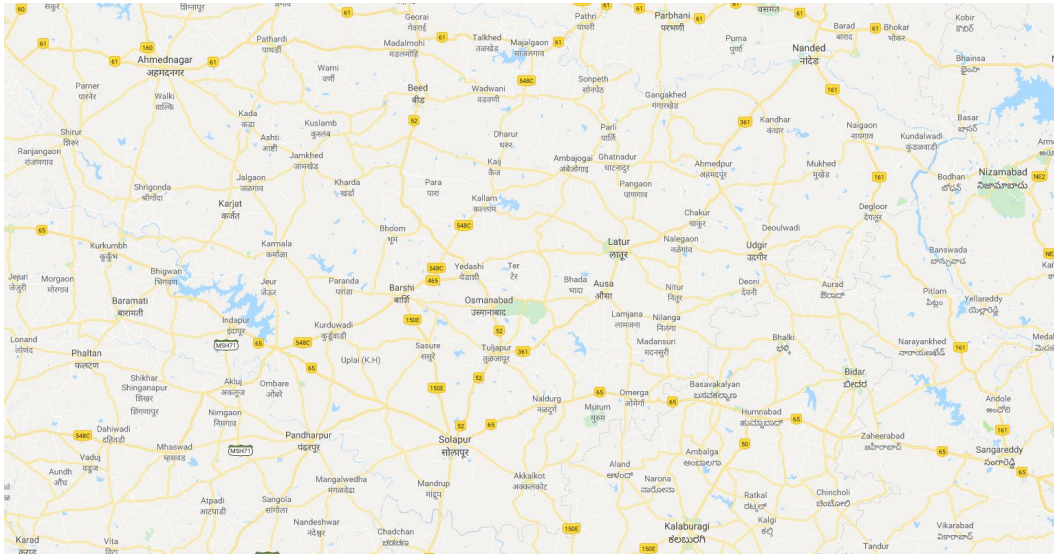


A **quick, scalable** and **cost-effective** Road Audit system for Road Maintenance is ***critical***

# Use case



Can be useful for Municipal Authorities

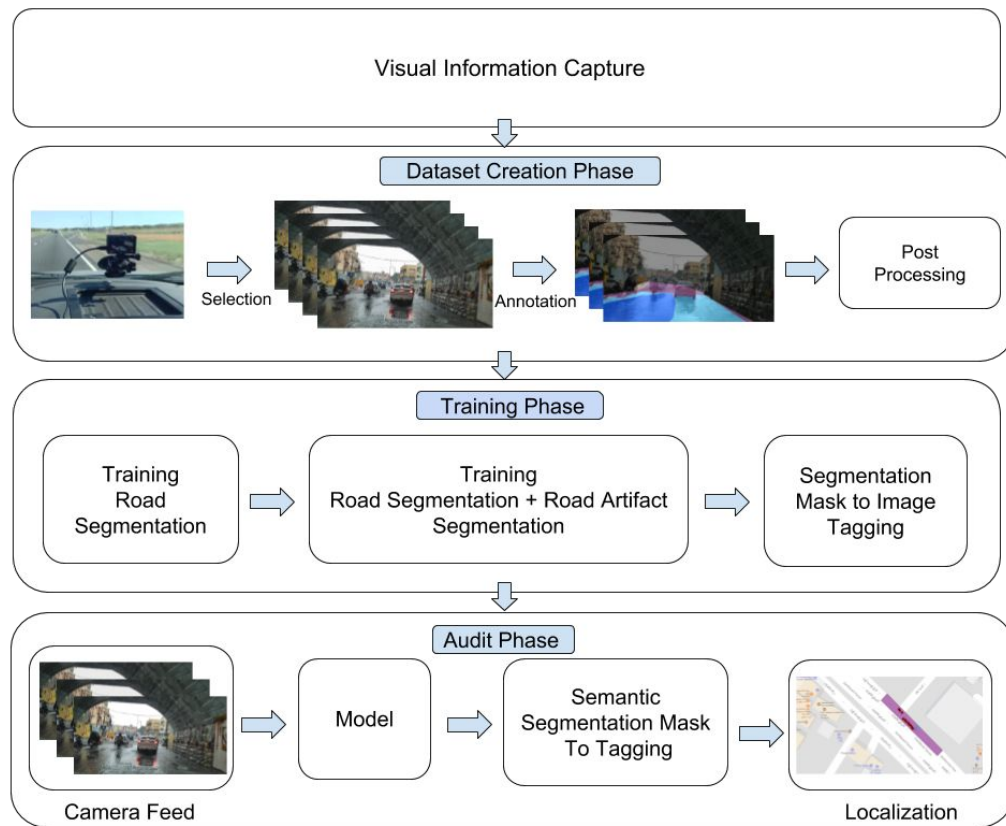


Can be useful in Autonomous Navigation



# System Overview

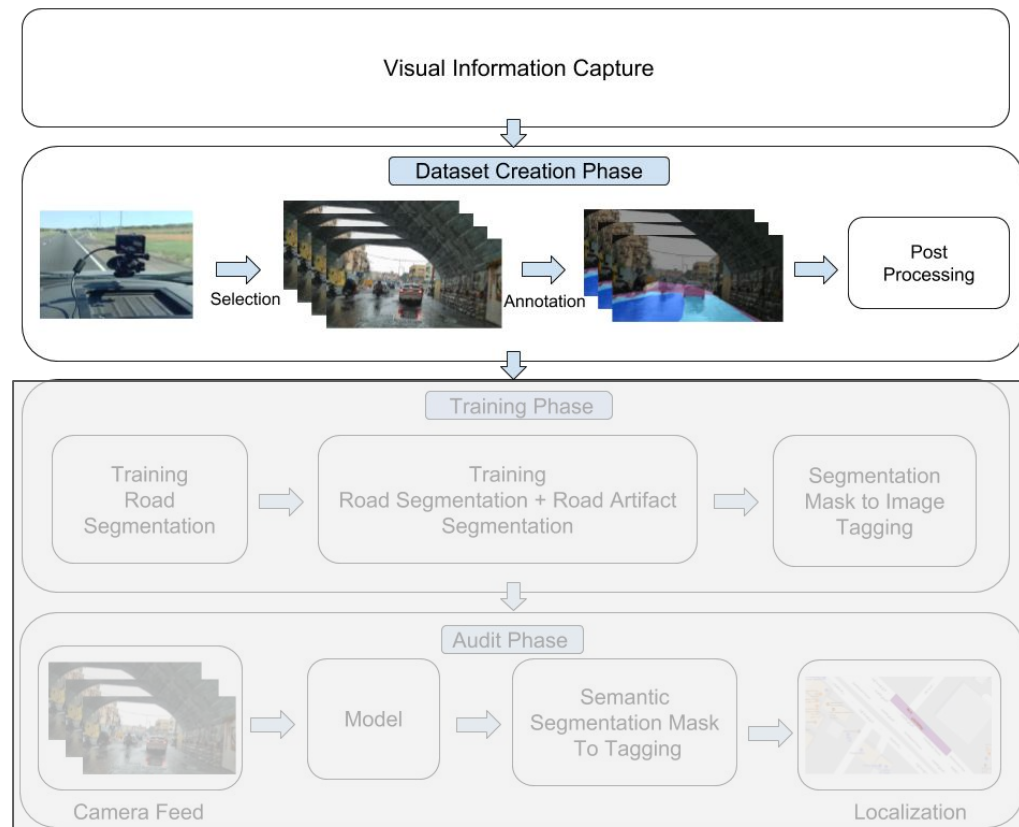
- Road Audit Dataset
- Custom Semantic Segmentation Model
- Image Tagging and Localization





# System Overview

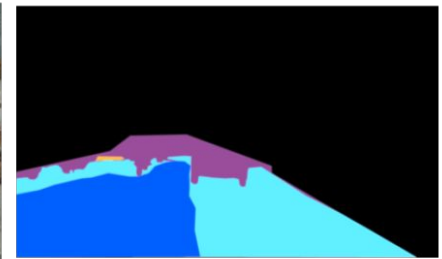
- **Road Audit Dataset**
- Custom Semantic Segmentation Model
- Image Tagging and Localization



# Road Audit Dataset

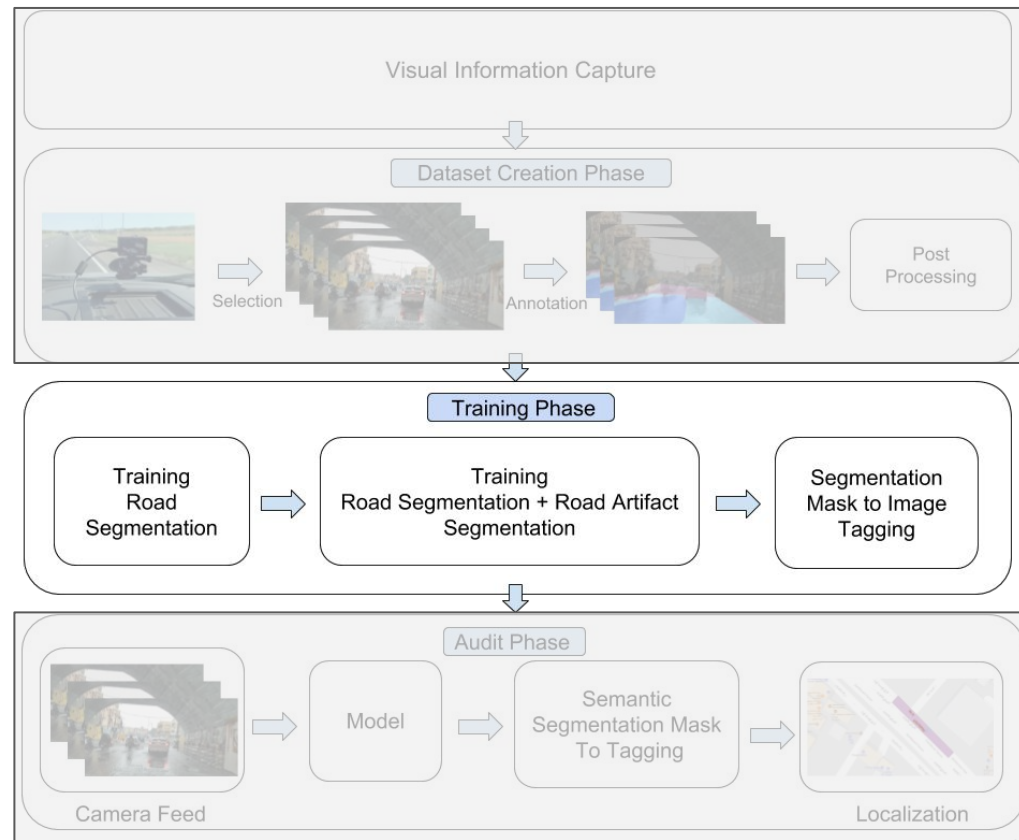
- Used **GPS enabled smartphone camera**.
- **10** kinds of defects eg., muddy area, pothole, water-log
- **18** drive sequences spanning **60 kms**
- A variety of highway roads, flyovers, and street roads
- Image Resolution : **1024 X 512 px**
- Train split : 1081, Val : 149, test : 181
- Dataset is available at

<http://bit.ly/road-audit-dataset>



# System Overview

- Road Audit Dataset
- **Custom Semantic Segmentation Model**
- Image Tagging and Localization



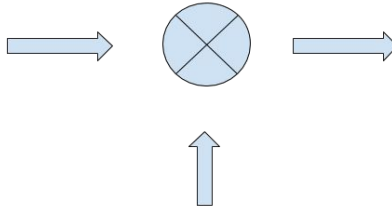
# Model

## Our Model

Input



Attention



Masked Road

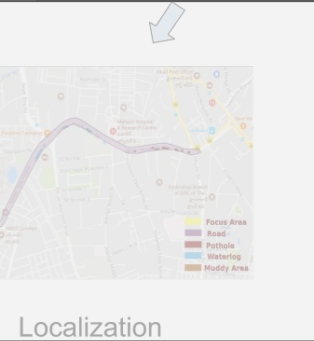
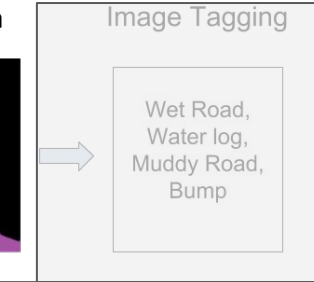


Road Defect Segmentation



Image Tagging

Wet Road,  
Water log,  
Muddy Road,  
Bump



Localization

Fully Convolutional  
Network

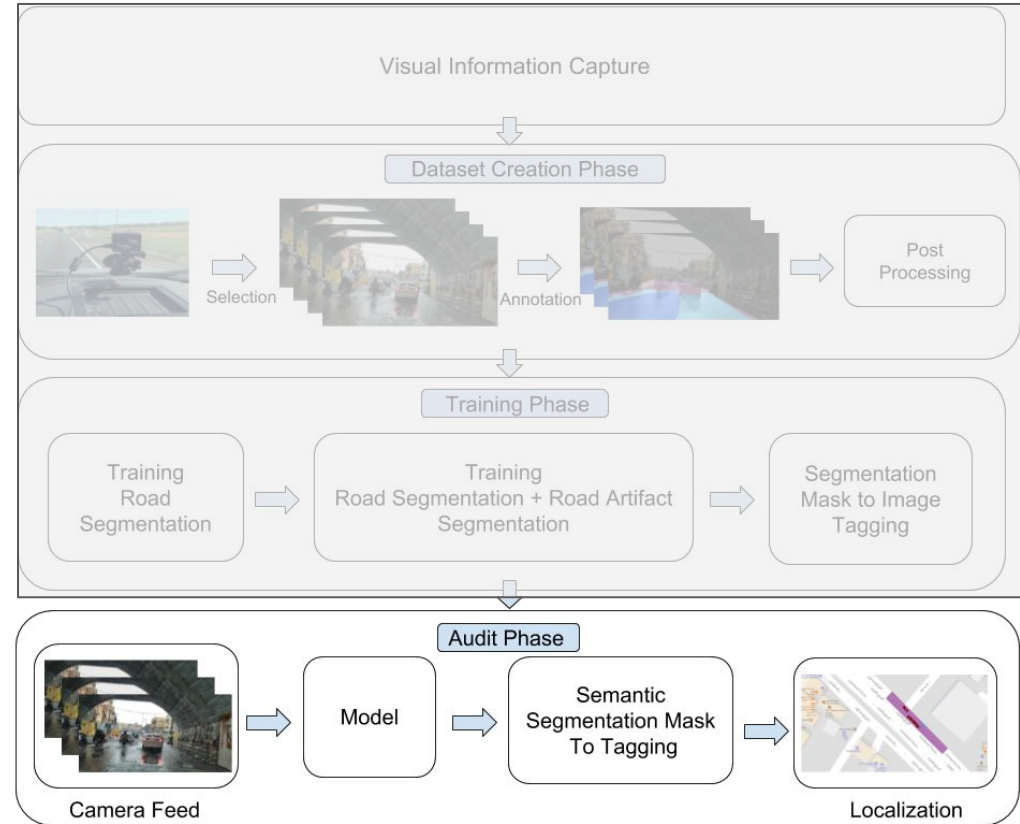
Road Segmentation

Modified ERFNet with Spatial Feature Pooling



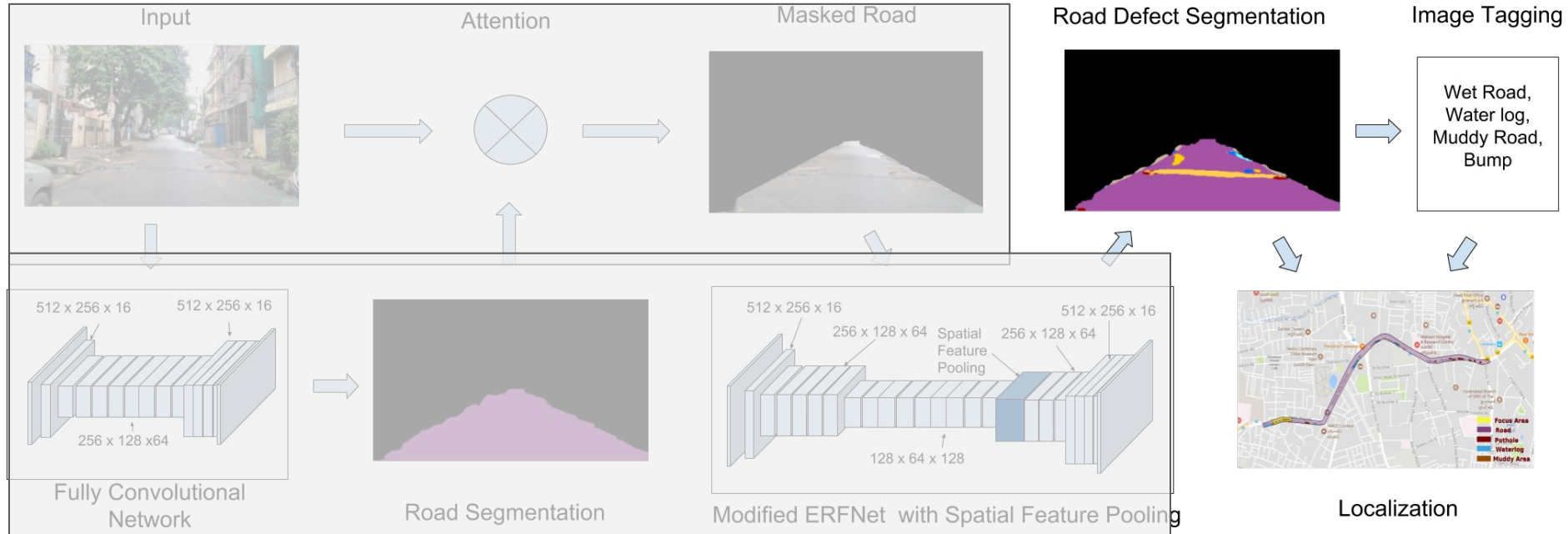
# System Overview

- Road Audit Dataset
- Custom Semantic Segmentation Model
- **Image Tagging and Localization**



# Model

## Our Model



# Results



Method	Accuracy	W IoU	Fps (1024 X 512 px)
ErfNet (Fine tuned)	41.8	59.8	41.7
ErfNet (Scratch)	42.1	59.8	41.7
<b>Refined ErfNet</b>	<b>45.7</b>	<b>60.7</b>	<b>26.4</b>

# Demo Video





**Gracias !!**  
**Thank you !!**

**Dataset** and **code** are available at <http://bit.ly/road-audit>



INTERNATIONAL INSTITUTE OF  
INFORMATION TECHNOLOGY

HYDERABAD